

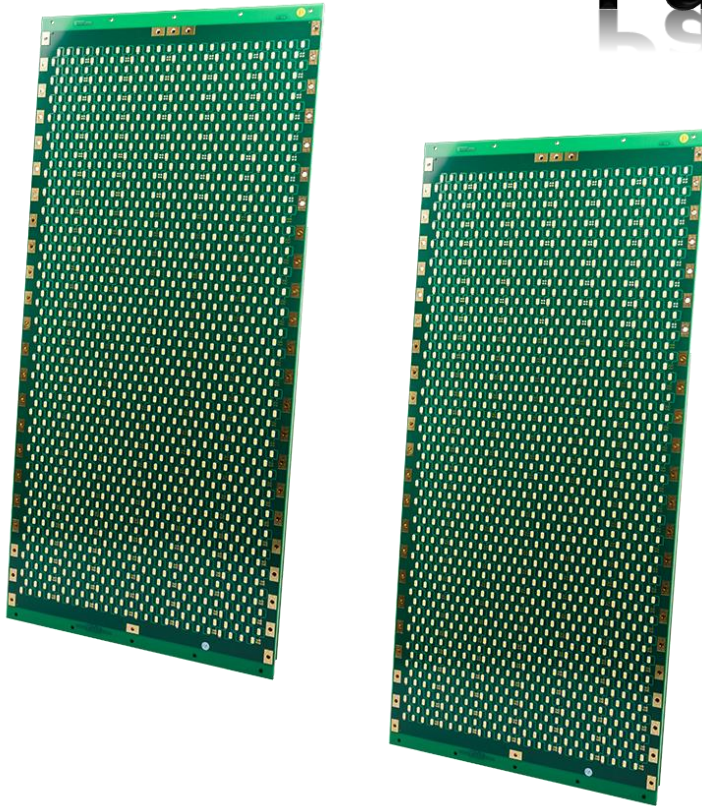
# VISTAscan



**Pattern Light Boards for your B, BC machines**

**Visit our website: [vista-scan.com](http://vista-scan.com)**

# Pattern Light Panels



## Description

The **Pattern Light Panels** series is a ground-breaking modular lighting system, based on high power LEDs, which is designed for the demanding challenges in industrial inspections and machine vision. The Pattern Light Panels are high frequently strobing light sources, which can be triggered by externally applied signals for reaching exact synchronization with the picture taking camera.

### SL Single LED Access:

The Flash Panels are fully programmable: You can completely configure your area light source to your needs. If you need a more dark field illumination applied to your object, let only the area around it flash. If you want to make inner structures of transparent objects visible, configure your flash light with varying intensities across the illuminated area, so you can emphasize edges which would not be visible in uniform illumination.

There is the possibility to store four different light patterns into board memory, which can be triggered independently. So, it is possible to accomplish different tasks with only one light source.

### RL Row Access:

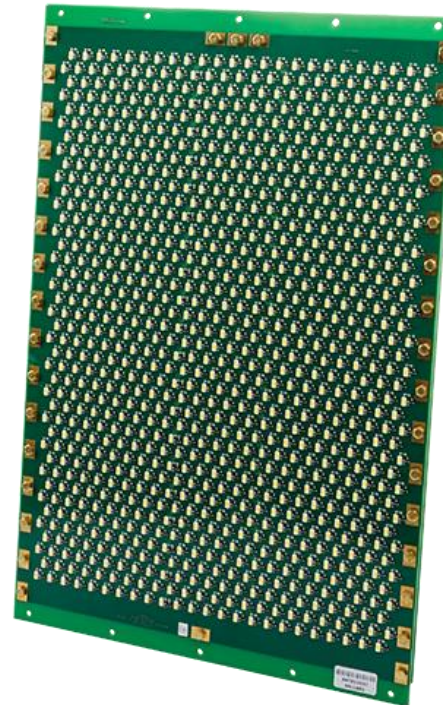
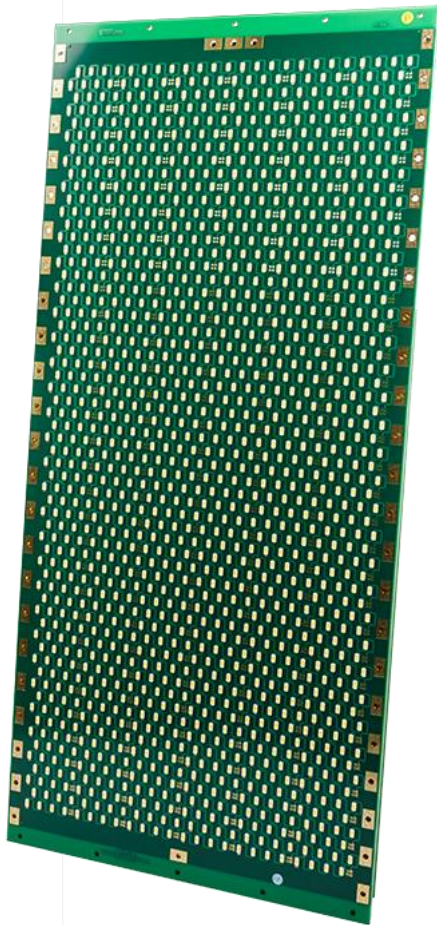
For less complex demands, we provide a second system. With the possibility for setting intensity values for each LED row you are able to apply predefined patterns like stripes or continuously changing brightness, for instance sinusoidal modulated intensity.

## Product Specifications

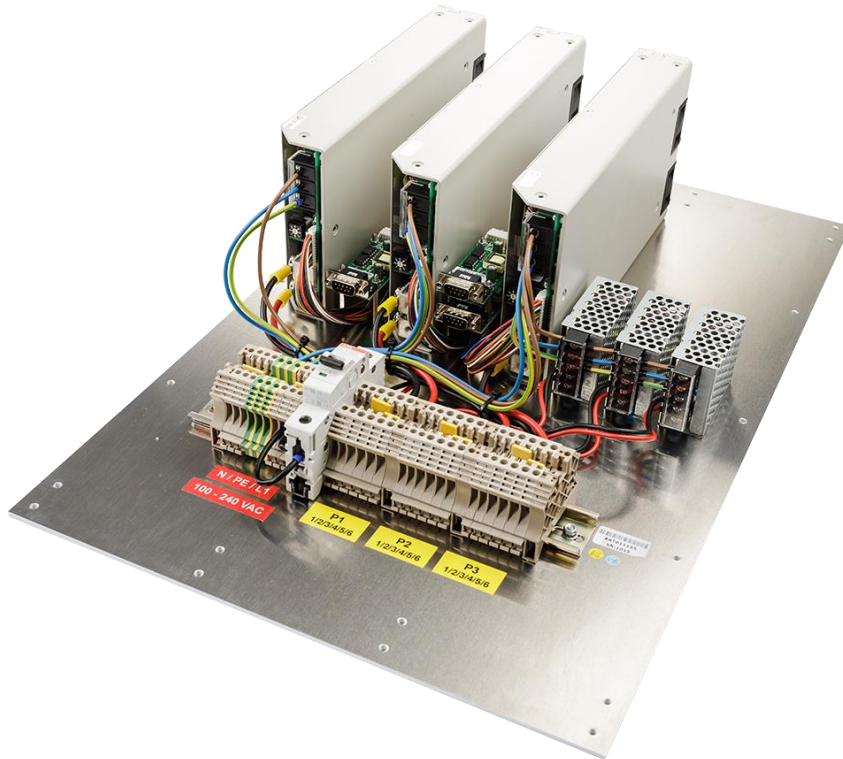
Operating Temperature:	-10 up to +75°C
Humidity:	95% non-condensing

# PATTERN LIGHT PANELS

Item Description	Article	LEDS	SL / RL	Panel Hight	Panel Width
VIS-PATTERN-LIGHT-PANELS-KIT		1440	ROW	660	310
VIS-PATTERN-LIGHT-PANELS-KIT		1160	SINGLE	460	310
VIS-PATTERN-LIGHT-PANELS-KIT		200	SINGLE	100	100



# POWER SUPPLY



## Description

Power Supply for three Pattern Light Panels.

## Product Specifications

Input Voltage:	100 – 240VAC 50/60Hz
Operating Temperatur:	-10 up to +60°C
Humidity:	90% non condensing
Measures:(HxWxD)	360x550x140mm

**Item Description**

**ART**

VIS-POWER-SUPPLY-PLB

# CABLE POWER



## Description

Cable for connecting the Power Supply to the Pattern Light Panel.

## Product Specifications

Cable designation:	M-Flex-JZ 1,5mm <sup>2</sup>
Operating Temperatur:	-30 up to +70°C
Number of conductors:	8
Connector/Jack:	8pol Connector Grey
Shielding:	
Cable color:	

### Item Description

### ART

### Length

VIS-CABLE-POWER

ART000

5m

# CABLE SERIAL



## Description

Cable for connecting the Power Supply to the Pattern Light Controller.

## Product Specifications

Cable designation:	LIICY 0,14mm <sup>2</sup>
Operating Temperatur:	-30 up to +70°C
Number of conductors:	15
Connector/Jack:	15pol Connector
Shielding:	Yes
Cable color:	Blue

### Item Description

### ART

### Length

VIS-CABLE-SERIAL

ART000

5m

# Contact us

## VISTAscan GmbH

VISTAscan GmbH  
Posthof 4  
86609 Donauwörth

Fon: +49 906 9999 8239

Email: [sales@vista-scan.com](mailto:sales@vista-scan.com)

## Email / Internet

Sales: [sales@vista-scan.com](mailto:sales@vista-scan.com)

Place an order: [order@vista-scan.com](mailto:order@vista-scan.com)

Website: [www.vista-scan.com](http://www.vista-scan.com)



[marketing@vista-scan.com](mailto:marketing@vista-scan.com)